

MAHLE Powertrain Prototype Assembly

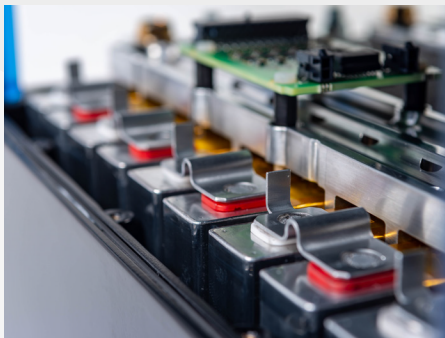
- > Save Time
- Reduce Risk
- Increase Flexibility



Prototype Build - Mechanical

MAHLE Powertrain's highly skilled team are experienced in building prototype assemblies from V12 engines. The engine build facility is equipped with:

- 18 x build bays with computerised documentation / build records
- Ability to screen off build bays to provide confidential build areas
- Machining and fabrication support
- Instrumentation fitting for temperature, pressure, vibration & strain
- Hot test stands for integrity checking
- 3 stage component wash



>> Electrical prototype build

MAHLE Powertrain Ltd
Costin House
St James Mill Road
Northampton
NN5 5TZ
Tel: +44 (0)1604 738 000

MAHLE Powertrain LLC
14900 Galleon Court
Plymouth
Michigan 48170
USA
Tel: 001 734 738-52 01

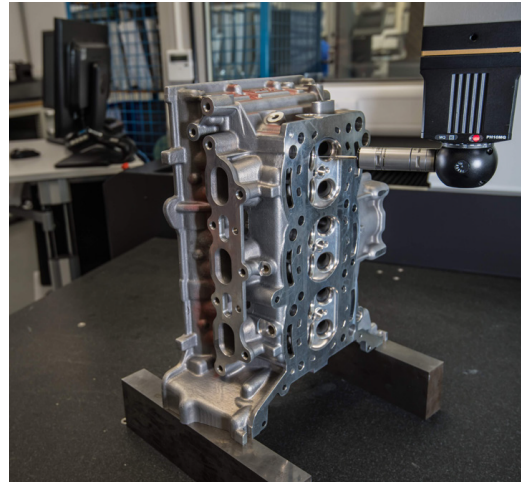
MAHLE Powertrain GmbH
Wamslerstrasse 5
81829
Munich
Germany
Tel: +49 89 96 29 15-0

MAHLE Powertrain Prorotype Assembly

Prototype Build - Vehicle

MAHLE Powertrain's mechanical and electrical build expertise combine to provide a highly skilled prototype vehicle assembly service , offering:

- 8 x build bays in a fully equipped confidential vehicle workshop
- Vehicle surface plate for measurement or BIW modification
- Full vehicle assembly from BIW or modification to existing vehicle
- Instrumentation & data logging equipment installation/ commissioning

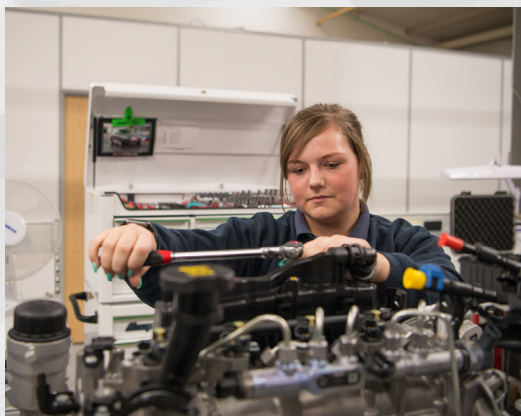


>> Metrology

Prototype Build - Electrical

MAHLE Powertrain's prototype electrical build capabilities have increased to cope with the demands of increasing powertrain electrification and can offer customers:

- Battery module assembly
- E-machine & battery instrumentation
- Harness manufacture
- E-machine assembly
- Battery module & e-machine end of line integrity testing



>> Attention to detail

Logistics & Metrology Services

MAHLE Powertrain has developed a Supplier Quality Assurance, Logistics & Metrology service that offers:

- SQA engineer support for supplier & deviation management
- Inward logistics for components using SAP
- Temperature controlled metrology area, traceable to UKAS standards
- 3D Laser scanning FARO arm
- Mitutoyo Scanning CMM
- Valvetrain component measurement, spring rates, camshaft profile etc.

MAHLE ZG Transmissions
Georg-Kollmannsberger-Str. 3
85386
Eching
Germany
Tel. +49 89 18 94 169-0

MAHLE Automotive Technologies
No. 1299 Huan Cheng Bei Road
Fengpu Industrial Park 201 401
Shanghai, Fengxian District
China
Tel. +86 21 5136-0595

MAHLE product information 10/2022

www.mahle-powertrain.com